

## Data sheet

Commercial Art.No.: 71.354.1035.1

hood BAS GOT GI 10 M25 A2

Hood revos basic made of aluminum, for single locking lever with nozzleM25 on the top, low version, 10-poles



Commercial Art.No.	71.354.1035.1
EAN	4015573651401
Order Unit	1

certificates / approvals



## Technical data

### general

housing material	aluminum
color	grey
surface	with powder coating
degree of protection (IP)	IP65
UV resistant	yes
flammability class of insulation material acc. with UL94	other
operating temperature range min.	-40 °C
operating temperature range max.	120 °C

### model

construction	10
model of the housing	male
locking mechanism	single locking lever
cable entry	above
type of cable	thread
with cable screw gland	no
thread size M	25
thread size PG	
hinged lid	no
EMC-version	no
length	89 mm
width	43 mm
height	53 mm

**classification**

ECLASS 11	
ECLASS 8.1	27440202
ETIM 9.0	EC000437
ETIM 8.0	EC000437
ETIM 7.0	EC000437
ETIM 6.0	EC000437
ETIM 5.0	EC000437
ETIM 4.0	EC000437
ETIM 3.0	EC000437

**product compliance**

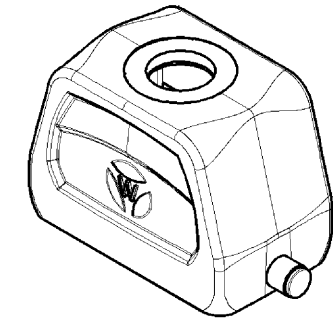
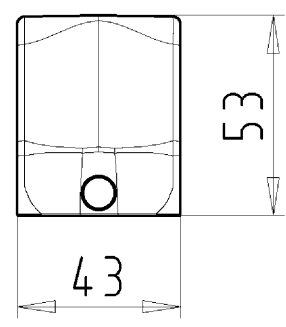
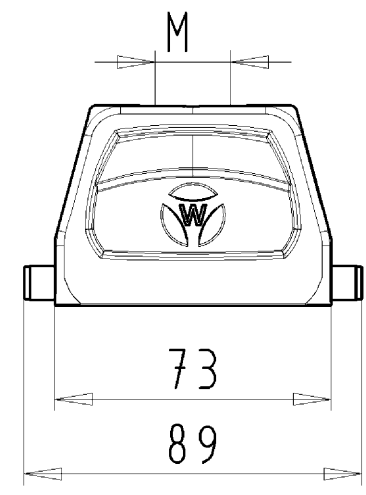
ROHS conformity status	compliant
REACH-SVHC conformity status	compliant

**Accessories**

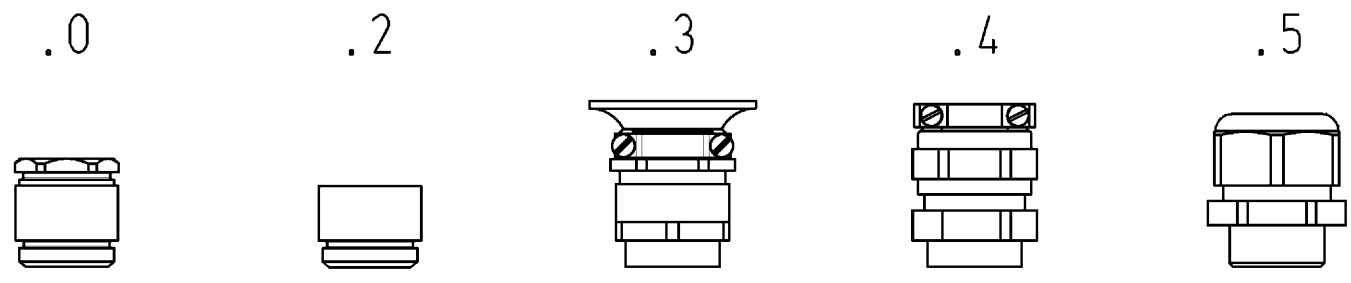
Commercial Art.No.:	Article-type description:	Description:

These dimensions will be especially checked at delivery  
 Only inspection dimensions  
 With /E marked dimensions are only valid for internal use

Diese Maße werden bei Abnahme besonders geprüft  
 Ausschließlich Prüfmaße  
 Mit /E gekennzeichnete Maße sind nur für interne Zwecke gültig



### Varianten/ Variants



71.35 <sup>4</sup> / <sub>2</sub> .1035.5	BAS GOT GI 10	M25 M20	A 5	Kabelverschraubung(KV), IP65 /Cable gland(CG), IP65	
71.35 <sup>4</sup> / <sub>2</sub> .1035.4	BAS GOT GI 10	M25 M20	A 4	KV mit Zugentlastung, IP54 /CG with strain relief, IP54	
71.35 <sup>4</sup> / <sub>2</sub> .1035.3	BAS GOT GI 10	M25 M20	A 3	KV mit Zugentlastung und Knickschutz, IP54 /CG with strain relief and bend support, IP54	
71.35 <sup>4</sup> / <sub>2</sub> .1035.2	BAS GOT GI 10	M25 M20	A 2	Zwischenstützen /Bushing	
71.35 <sup>4</sup> / <sub>2</sub> .1035.1	BAS GOT GI 10	M25 M20	A 1	Gewindebohrung /Thread hole	X
71.35 <sup>4</sup> / <sub>2</sub> .1035.0	BAS GOT GI 10	M25 M20	A 0	Kabelverschraubung(KV), IP54 /Cable gland(CG), IP54	
Bestellnummer /Order number	Typ /Type		Varianten /Variants		dar- gestellt /drawn

Weitere Daten siehe KATALOG oder eKatalog.  
 Additional data see CATALOG or eCatalog.  
[www.wieland-electric.com](http://www.wieland-electric.com)  
[eshop.wieland-electric.com](http://eshop.wieland-electric.com)

Tolerierung Size ISO 14405 (E) / Tolerance system Size ISO 14405 (E).  
 (This ISO-standard describes the envelope principle. According to the envelope principle the deviations of form and parallelism are limited by the size tolerances).

ja/yes  Stoffverbots- und Deklarationsliste nach UU-TOM-05/03 ist einzuhalten.  
 Conformity with Wieland document UU-TOM-05/03 (list of prohibited / declarable hazardous substances) to be declared!

Freitoleranz nach General tolerance CAD - Zeichnung, keine manuellen Änderungen CAD - drawing, no manual modifications allowed 1. Verwendung: - First Use: - Blatt: 1 von 1 Sheet: of 1

Werkstoff/Material Aluminium beschichtet/ coated grau/ grey	2013 Tag/Date 17.09. Name Treschan	T	Zeichnung Nr./Drawing No. 71.352.1035.0 13K	Index	
Maßstab/Scale 1:2	gezeichnet/drawn geprüft/checked Normgepr. Stand. check				
Maße in mm/Dimensions are in mm					
Ersatz für/Replacement for: -					
wieland Elektrische Verbindungen		Type revos BASIC	Benennung/Tittle GEHAEUSEOBERTE IL		
Index Datum / Blatt Date / Sheet		Baugröße 10-Kabelabgang oben-M20/M25 Hood size 10-cable outlet top-M20/M25			
Änderung/Revision					

Weitergabe sowie Vervielfältigung dieses Dokuments, Verwertung und Mitteilung seines Inhalts sind verboten, soweit nicht ausdrücklich gestattet. The reproduction, distribution and utilization of this document as well as the communication of its contents to others without express authorization is prohibited.

713521035013K\_2 CADW/3028 Treschan 2013-09-201093857 1.000